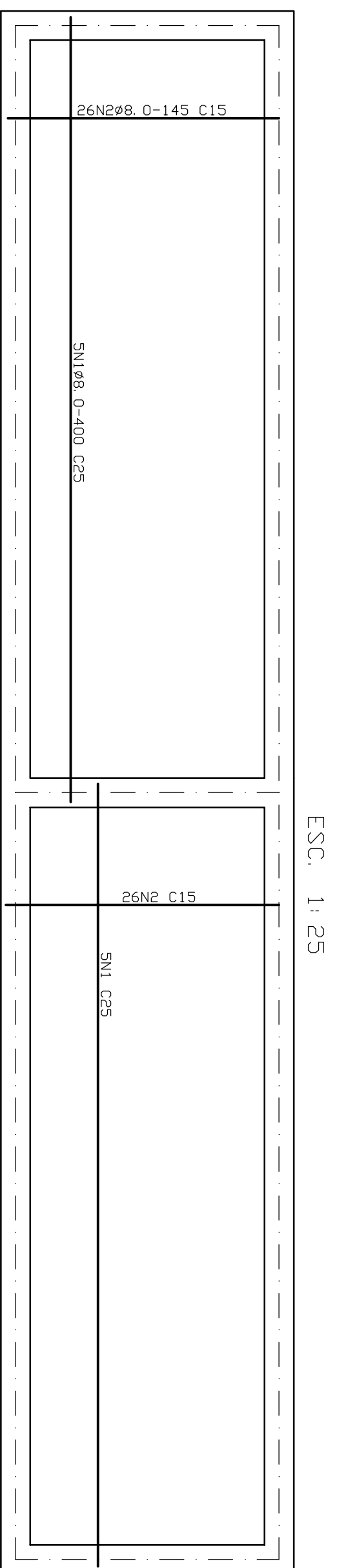
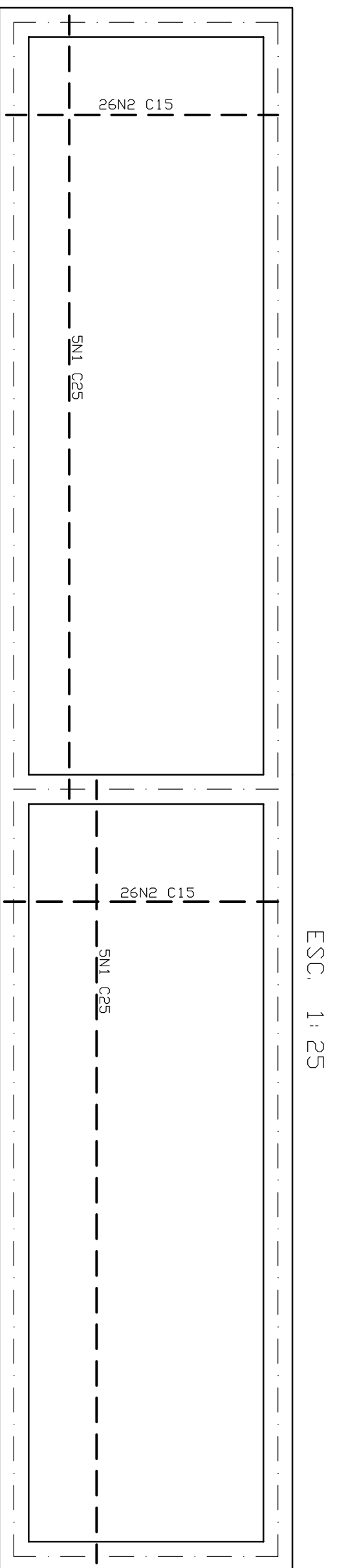


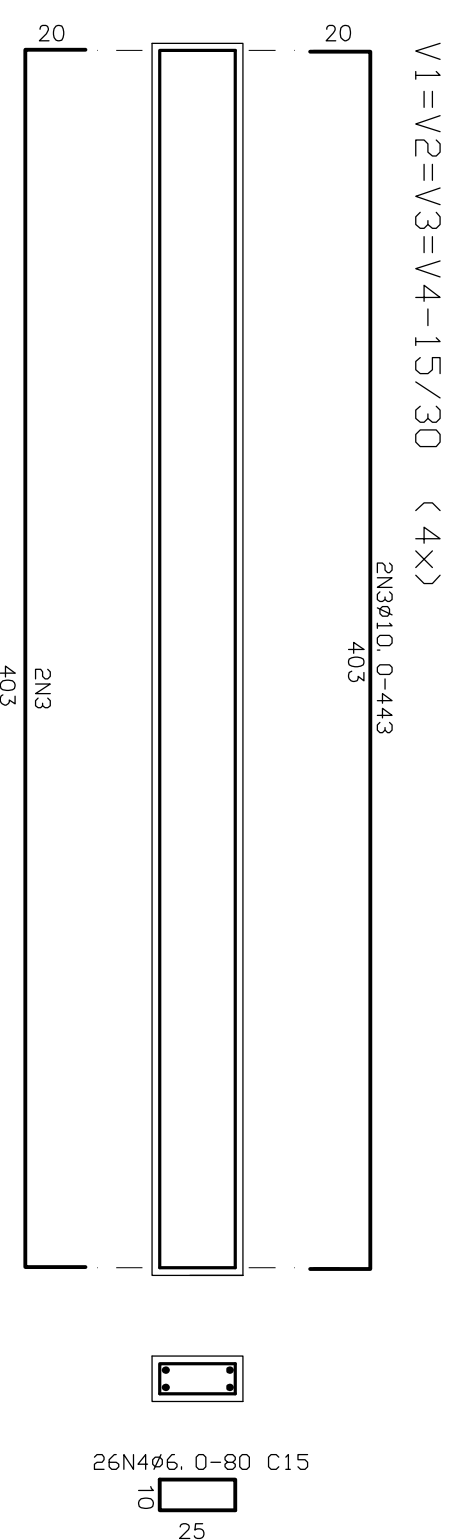
## ETA 15m3 - FORMA



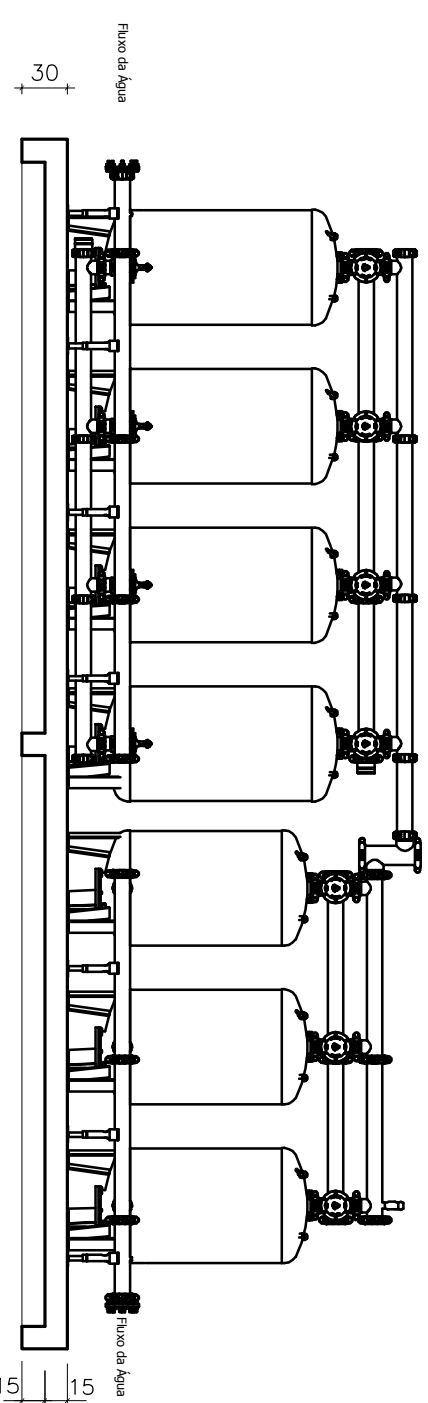
## LAJE - ARM. POSITIVA



## LAJE - ARM. NEGATIVA ESC. 1:25



$$V_1 = V_2 = V_3 = V_4 = 15/30 \quad (4x)$$

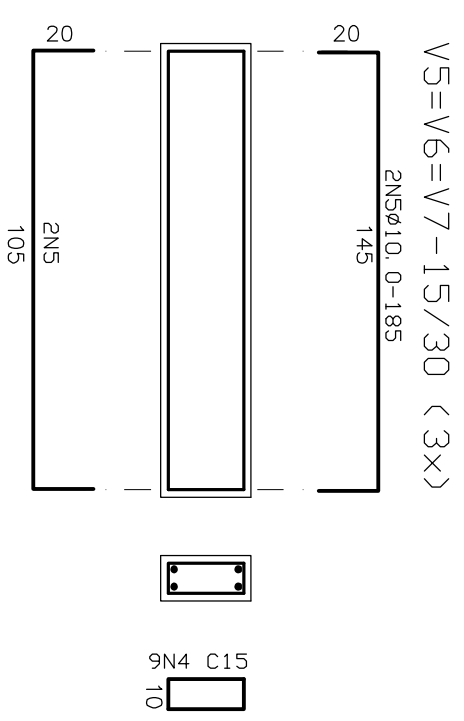


RELACION DO ACID					
ACID	N	DIAM.	D.	UNIT (CM)	C. TOTAL (CM)
50B	1	8 0	20	400	8000
	2	8 0	104	135	15080
	3	10 0	15	443	7038
		10 0	12	123	2220
60B	4	6 0	131	80	10480

## RELACAO DO ACID

RESUMO DO ACD			
ACD	DIM	C. TOTAL (m)	PESD + 5% (kgf)
CA50B	8, 0	230, 8	97
CA50B	10, 0	93, 1	61
CA60B	6, 0	104, 8	28
PESD TOTAL			
CA50B	158 kgf		
CA50B	28 kgf		

Vol. concreto total	=	2.30 m <sup>3</sup>
Área de forma total	=	12.30 m <sup>2</sup>
fck	=	200.00 kg/cm <sup>2</sup>

[illegible][illegible][illegible]